



Sealmatic Successfully Delivers Its Mechanical Seal Type SBF – D (API 682) Seal Size 140 mm For Refinery Application

The processing of crude oil in refineries is a complex and multi-stage process in which crude oil is transformed into refined, high-quality end products or feed materials for petrochemical industry. Sealing technology for such diverse applications have to meet challenges in various respects; risk of insufficient lubrication and dry running, media with a diversity of physical properties, high and low temperature ranges and the handling of hazardous substances and all other conditions which need to be controlled with absolute reliability. With a comprehensive range of API-compliant quality seals and supply systems Sealmatic is playing a key role towards ensuring the reliability and safety of refinery processes.

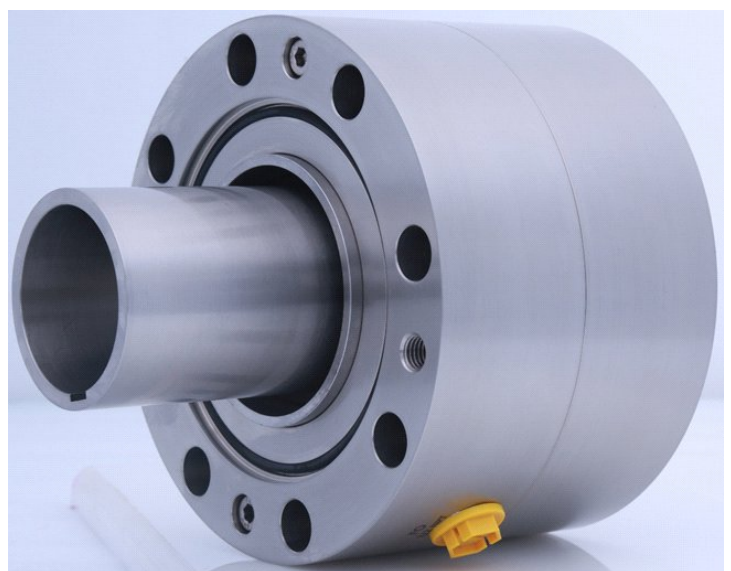
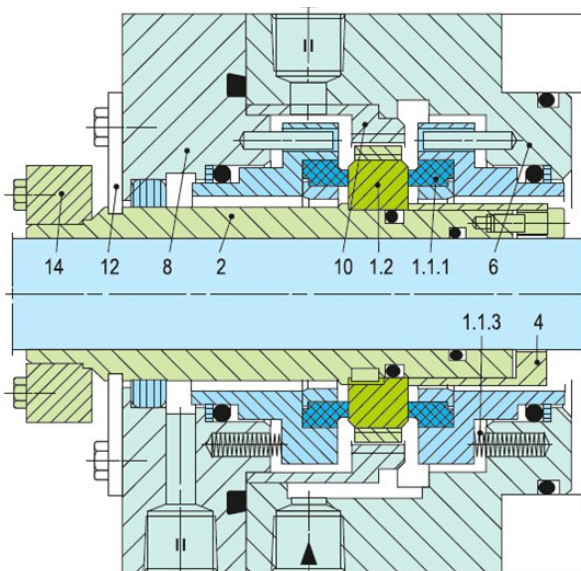
Mechanical Type SBF – D, is meticulously designed to not only meet but surpass the exacting demands of refinery application. The said mechanical seals is designed in compliance with API 682 standards, this mechanical seal boasts a superior construction and utilizes cutting-edge materials that empower it to endure the severe temperatures and pressures. Its exceptional design not only ensures the integrity of refinery operations but also contributes significantly to safety protocols.

Operating Parameters Of Type SBF – D Mechanical Seal									sealmatic®
Sr. No	Seal Type	RPM	Media	Temperature (°C)	Stuffing Box Pressure (Kg/cm ²)	Suction Pressure (Kg/cm ²)	Discharge Pressure (Kg/cm ²)	Viscosity (cSt)	API Plan
1	91-SBF-D/140-G911 (DE)	1492	Produced Water	90°C	6.5	3.5	103.1	0.596	53B
2	91-SBF-D/140-G912 (NDE)	1492	Produced Water	90°C	6.5	3.5	103.1	0.596	53B

As per the above-mentioned operating parameters. We are pleased to announce that Sealmatic Mechanical Seal Type SBF – D (API 682 compliant) has been successfully delivered for refinery application. Thus, with a comprehensive range of API complaint quality seals and supply systems Sealmatic is playing a key role towards ensuring the reliability and safety of refinery processes. Utilizing high quality materials and a meticulously engineered structure, this seal can withstand extreme temperatures and pressures found within refinery equipment.

Sealmatic Mechanical Seal Type SBF – D (API 682 compliant) For Refinery Application

Type SBF – D is a balanced cartridge API mechanical seal suitably designed for refinery application and other process industries. It has the mechanical seal configuration as 3CW – FF (Contacting Wet – Face-to-Face). Type SBF – D can operate under high sliding velocities and high pressures. The mechanical seal is designed with integrated pumping device for increased efficiency in circulation. Also the optimum heat dissipation is achieved due to integrated pumping device available for increased efficiency in circulation and optimized seat design.



Performance Capabilities

- Shaft diameter: d1 = Upto 250 mm (Upto 10.000")
- Pressure: p1 = 150 bar (609 (2,175 PSI)
- Temperature: t = 200°C (392°F)
- Speed: 60 m/s (197 ft/s)

Technical Features:

- Accommodates shaft deflections due to stationary design
- Can be designed for individual pump application with corresponding connection parts to be adopted to the pump seal chamber
- Cartridge unit factory assembled for easy installation, which reduces downtime
- Trouble-free long-term operation due to heavy duty single seat design with bandage.

September 10th 2024

